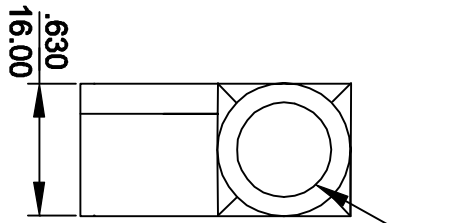
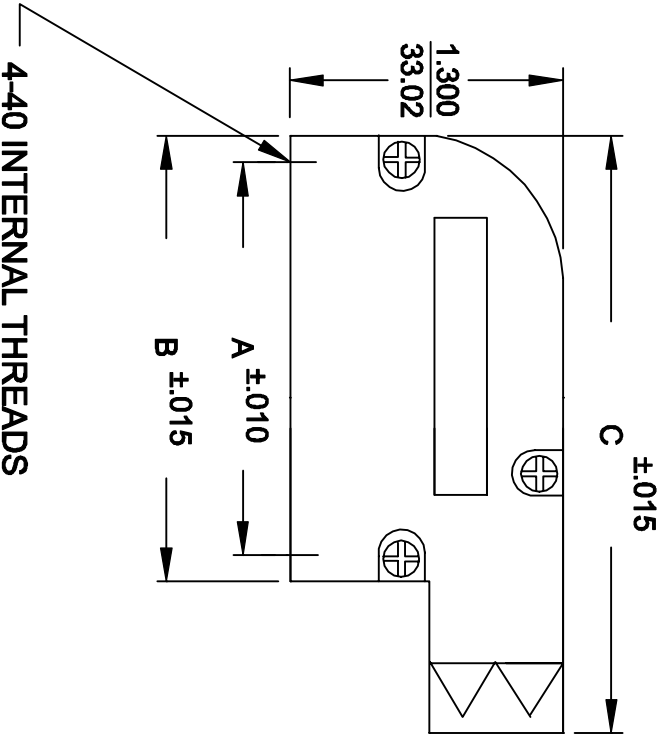


DESCRIPTION: 981 SERIES R/A BACKSHELL

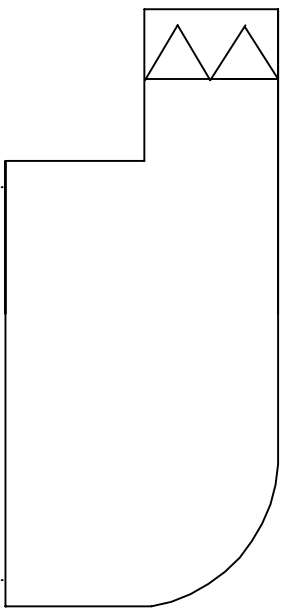
- BACKSHELL KIT INCLUDES:
 (2) BACKSHELL HALVES
 (3) HOUSING SCREWS
 (1) GROMMET TREE
 (NON-CONDUCTIVE GROMMETS)

981-XXX-XXX-XX1

SERIES _____
 POSITIONS _____
 009
 015
 025
 MATERIAL _____
 030 = ZINC
 COLOR: _____
 12 = NICKEL OVER COPPER
 PUT-UPS _____
 1 = KIT




.433 Max. Cable Dia.



SIZE	A	B	C
9	.984	1.240	1.850
15	1.312	1.555	2.323
25	1.852	2.106	2.835

4-40 INTERNAL THREADS

MATERIAL: DIE-CAST ZINC ALLOY
 NICKEL PLATED


 THESE DRAWINGS AND SPECIFICATIONS ARE THE PROPERTY OF NorComp AND SHALL NOT BE REPRODUCED, COPIED OR USED AS THE BASIS FOR THE MANUFACTURE OR SALE OF APPARATUS WITHOUT WRITTEN PERMISSION.

DRAWN: **PAM JENKINS** DATE: **7-23-99**
 CHECKED: _____ DATE: _____
 SCALE: _____ SHEET _____ OF _____ REV **2**
 DWG NO. **981-0XX-030-121**